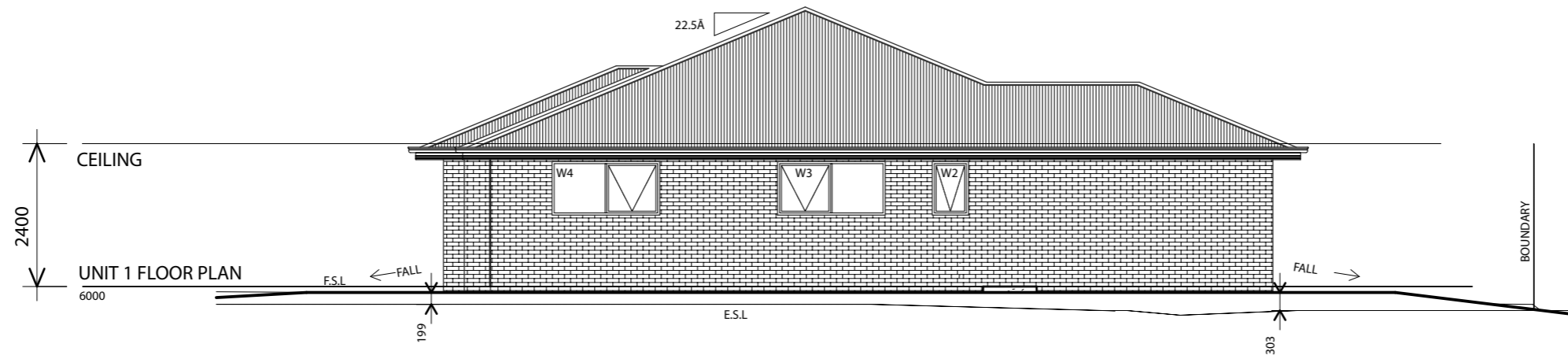
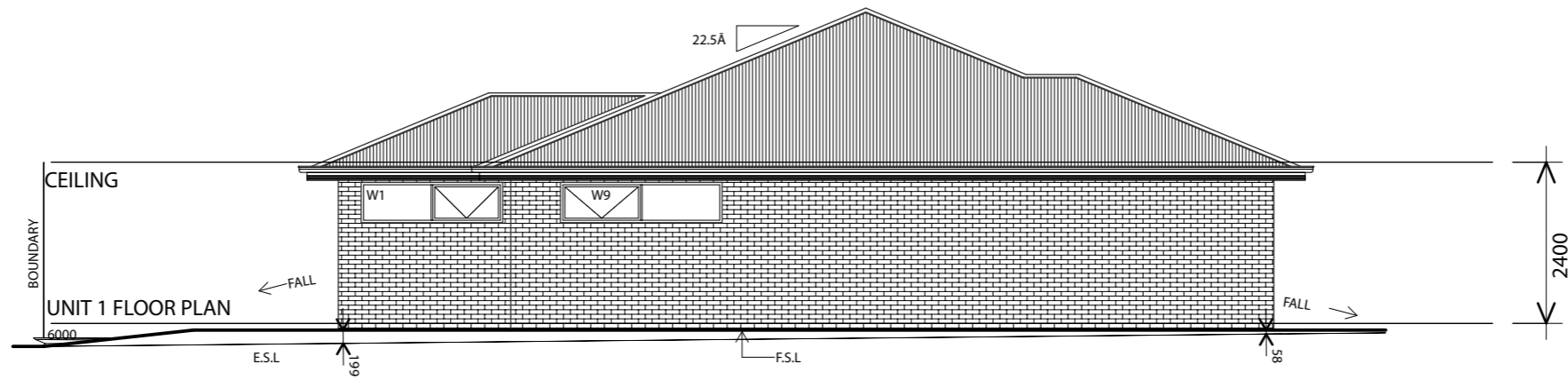


Northern Elevation



Eastern Elevation



Western Elevation

Unit 1 & 2 - 10 Tully Street, St Helens priced at \$395,000

Specifications

September 2020

Internal

- 67x12 bevelled arcs and skirting –painted
- Flush doors – painted
- Painting –single coloured walls throughout
- Door furniture
- 16mm Melamine wardrobe shelving – adjustable shelves and hanging space per bedroom
- Sliding Aluminium Wardrobe doors with white glass inserts inserts
- 50mm cove cornice
- R5 Insulation to ceilings
- R2.5 to all External walls
- Frameless mirrors over vanities
- 1500 x 900 shower system to bathroom
- 900 x 900 Shower system to ensuite
- Hot water service – Electric 250Ltr 3.6kW
- Tapware
- Vanity Units
- Close Coupled Toilet Suites
- Carpet to Bedrooms and Living
- Vinyl Plank to Entry, Hall, Kitchen and Dining
- Floor tiles and skirting to wet areas, tiles to bath hob, vanities, laundry and kitchen splashbacks
- Kitchen – Painted Satin doors, soft close draws and doors, laminate bench top
- Kitchen Appliances – Hafele -Milano Oven, Hotplate, Rangehood and Dishwasher – Stainless Steel finish
- Window Furnishings – Roller Blinds

Exterior

- Concrete driveway
- Water tank - 2,000 ltr poly water tank
- 2 Outdoor taps
- Dividing fences - Painted picket fence
- Boundary fence – Treated pine

Dwelling Exterior

- Island Block and Paving Brick
- Colorbond roof – flashing and gutters
- Fibre cement sheet eaves generally
- 90mm PVC painted downpipes
- Entry Door – Hume Savoy XS24-820 with side window
- Double glazed standard powdercoated windows, no tint, obscure glass to bathrooms and toilet, flyscreens

Exclusions

- Laundry Appliances and Refrigerator
- Service Connection fees